

Working with architects and contractors



Opening the Book has worked with architects to design library interiors for new builds, co-locations, refurbishments and conversions. We work across all kinds of buildings from 18th century churches to 21st century leisure centres with Carnegie original libraries, art-deco splendours and brutalist modernism along the way.

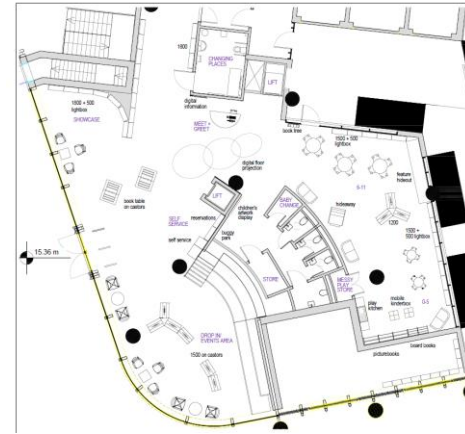


Shoe Lane Library at Hill House



Existing library to be relocated into major new development in the City of London

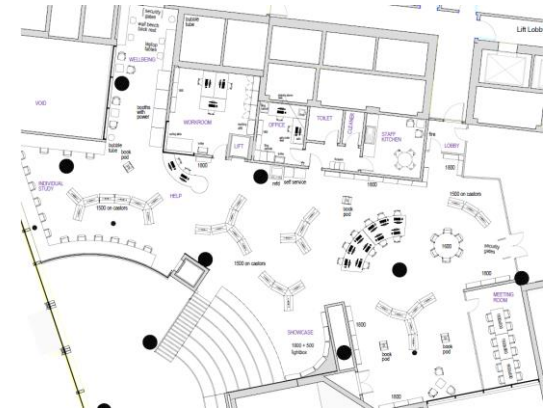
Shoe Lane Library at Hill House



Ground floor with performance/ seating space



New mezzanine



Shoe Lane Library at Hill House



Danum Gallery:Library:Museum



Danum Gallery:Library:Museum
Bond Bryan Architects

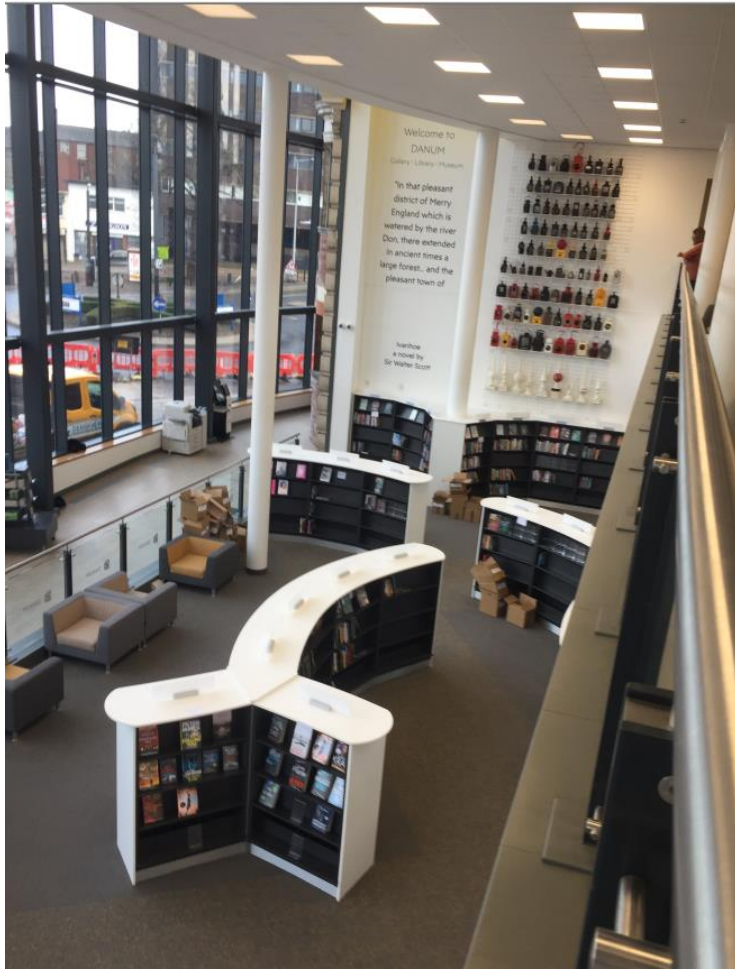


Danum Gallery:Library:Museum

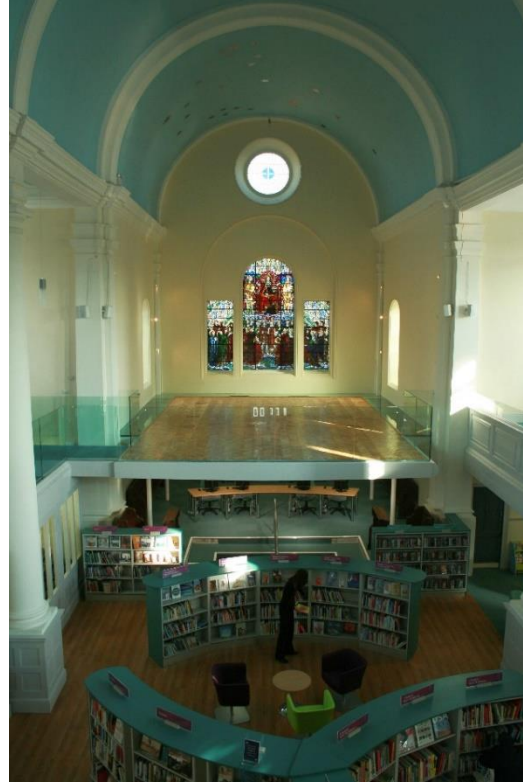


Discovery layout works with unusual building shape wrapping original Girls' High School

Danum Gallery:Library:Museum



Working with architects



St Aubyn's Library Church
Library on ground floor, worship on mezzanine

Gilmore Hankey Kirke Architects

Working with architects



Library relocated to first floor ballroom
in Tunstall Town Hall



Working with architects

Oxford County Library

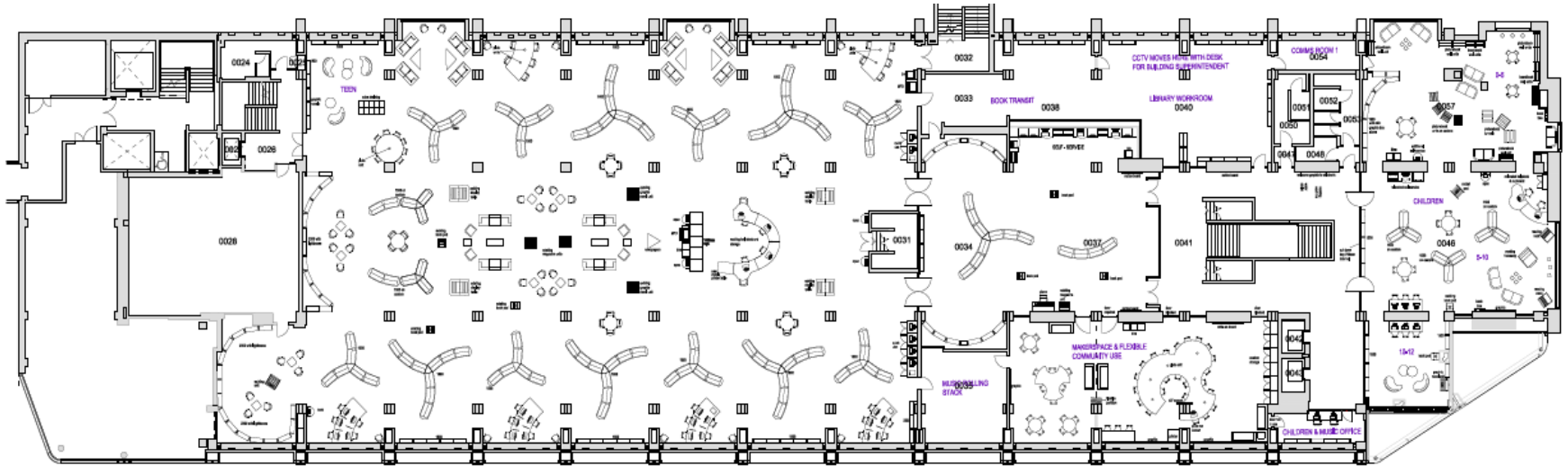


Douglas Murray 1973



BDP Architects 2018

Oxford County Library



Library refurbished as part of Westgate Oxford redevelopment

Niagara-on-the-Lake Public Library



Chamberlain Architect Services built 2000



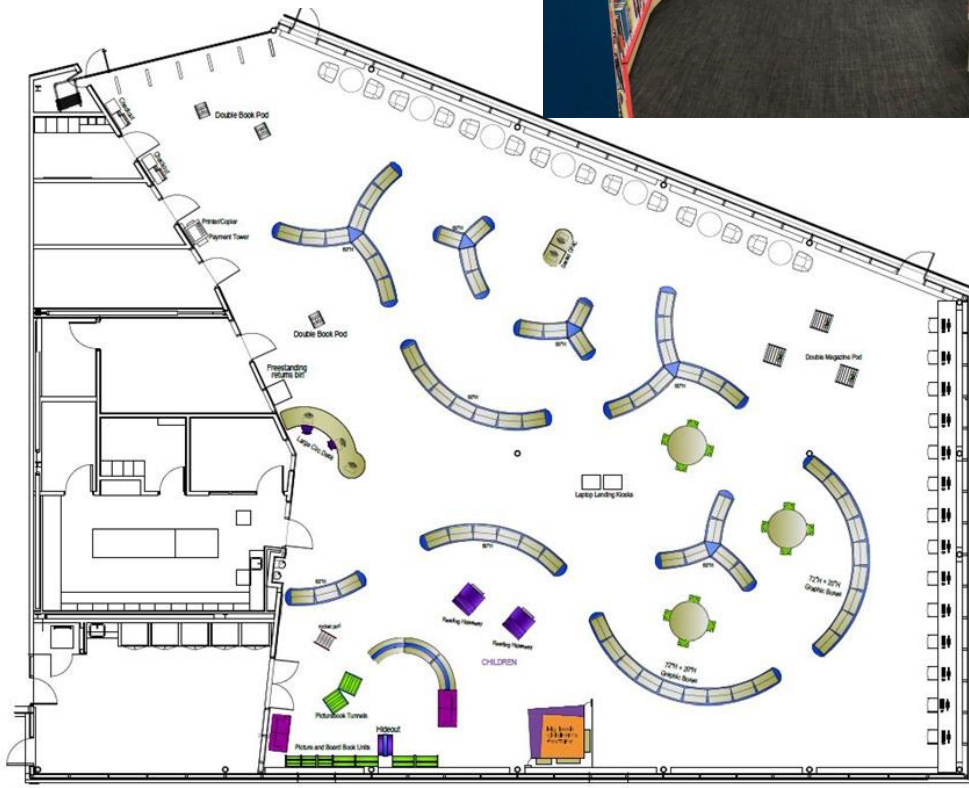
Opening the Book worked with Chamberlain Architects and created a new discovery layout to maximise the impact of the building refurbishment.

Milton Public Library, Ontario

Sherwood Community Centre
designed by MJMA Architecture and Design

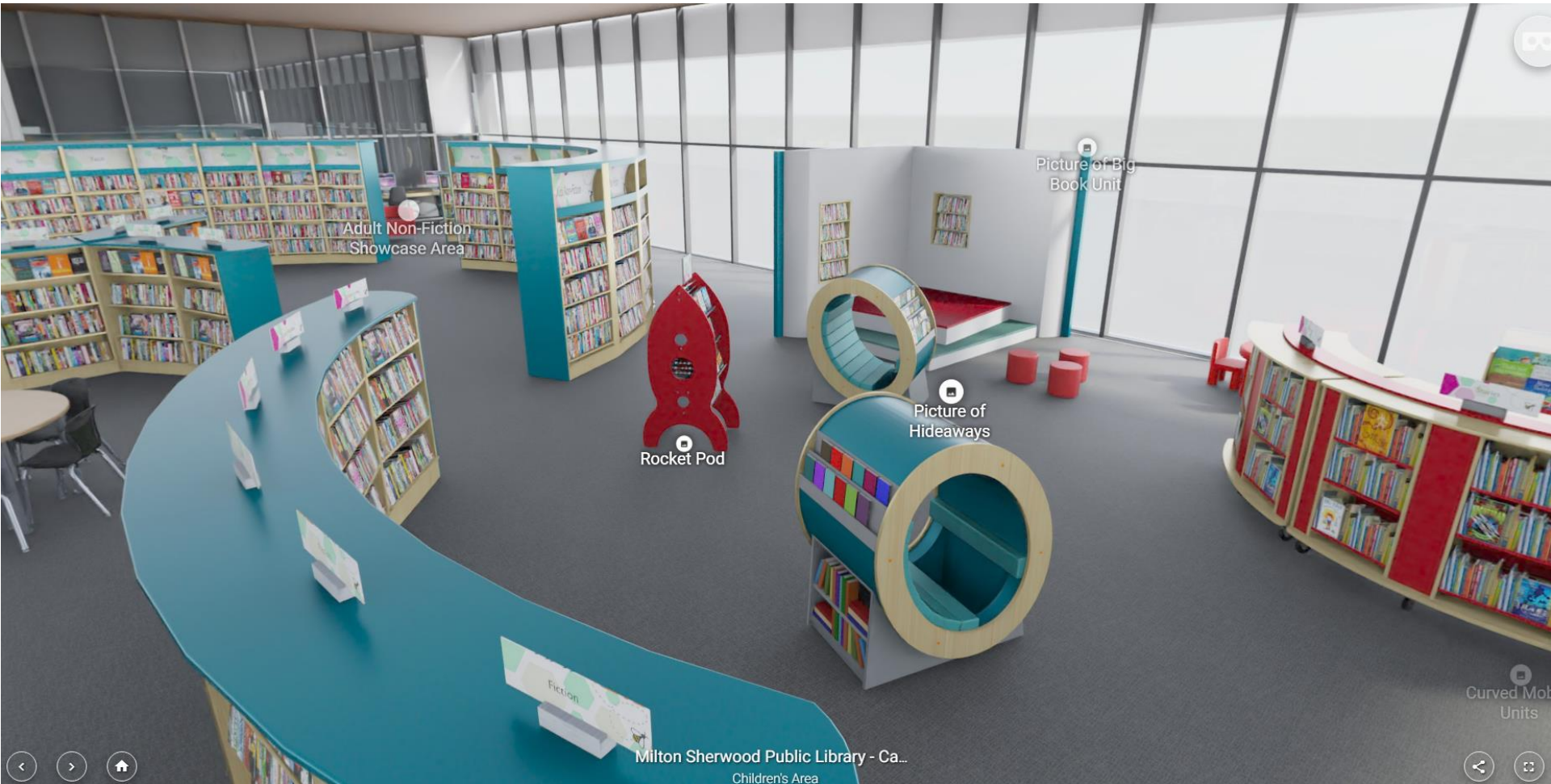


Sherwood Branch discovery layout



Desks and lounge in windows retained as part of core build. MJMA approved new Opening the Book discovery layout in the central space. Result is one of the highest performing libraries in Canada.

Sherwood Branch discovery layout



Working with contractors

Opening the Book has worked with some of the UK's largest construction companies as well as many local ones. We have gained high scores for our performance.

We play a full role in Design Teams and bring especial expertise in acting as a bridge between contractors and their library clients.

2021 Wilmott Dixon Construction Works
Partner Performance Review
Score: 91%

2016 Morgan Sindall Performance Assessment
Score: 96.9%



LEAD CONSULTANT:

Rachel Van Riel
Director, Opening the Book

Call: +44 1977 602188
rachel@openingthebook.com

www.openingthebook.com



**Opening the Book's Yorkshire office by
Alex McIntyre Architects**